

## Removal of glass in a fixed frame.



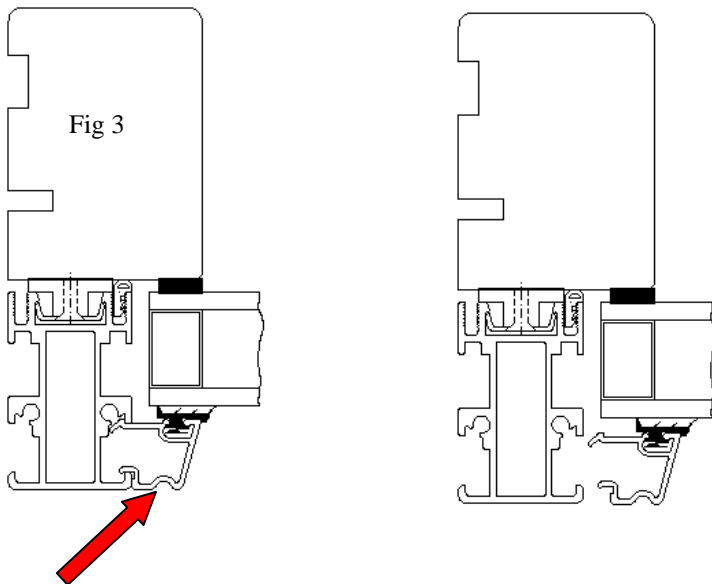
- The glass beading is removed with the help of a wide wooden wedge and a hammer.
- Start on one side of the glass beading.
- Hold the wedge as shown in fig. 1 and tap the glass beading off.
- Use the groove in the glass beading as shown in fig.2 and at arrow at fig.3



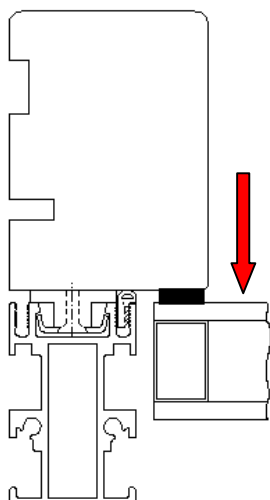
Fig 1



Fig 2



- If there is glass beading without grooves Use the comparison as shown in fig.4.



After this the glass blocks are removed and the glass can be pushed out

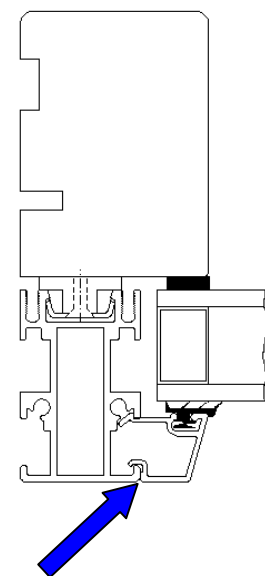
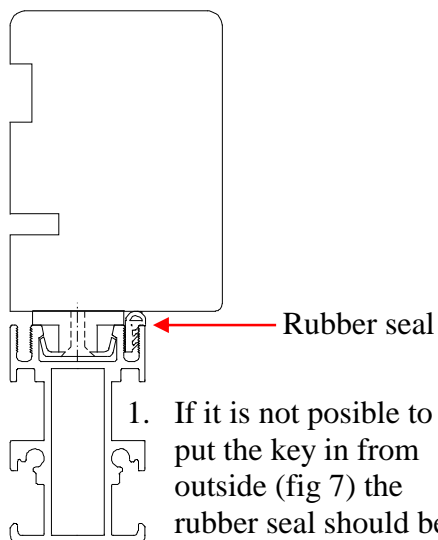


Fig 4

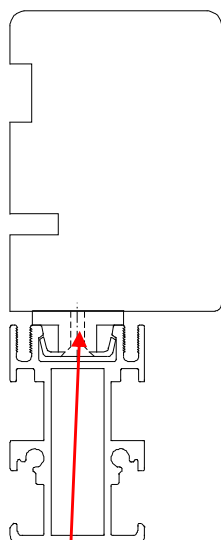




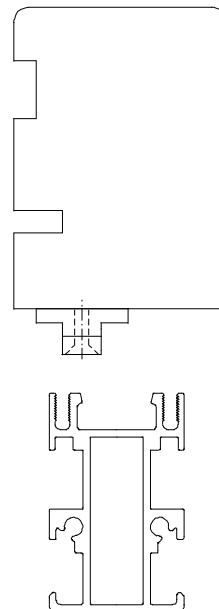
## Removal of the Aluminium-frame



1. If it is not possible to put the key in from outside (fig 7) the rubber seal should be cut away with a knife and the key can be put in as shown in (fig 8)



2. Turn all the plastic clips a  $\frac{1}{4}$  turn  $90^\circ$  with the special key from FVD. As shown in fig. 5 and fig. 6



3. After this the aluminium-frame is loose.

Fig 5

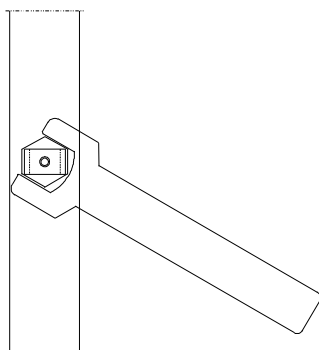


Fig 7 ( outside view )

Fig 6

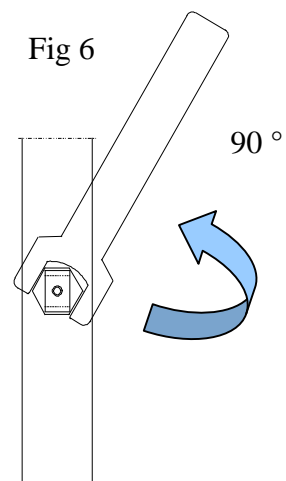
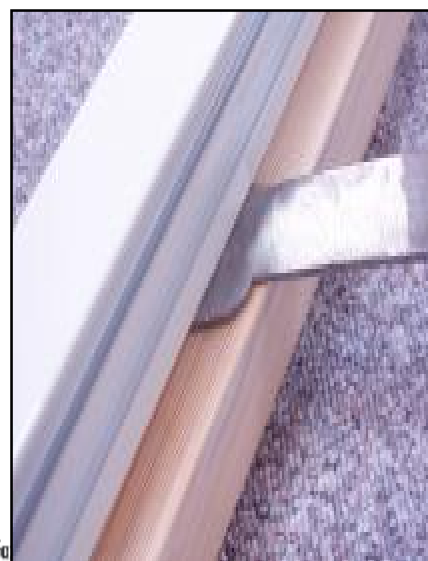


Fig 8 ( inside view )



## Removal of Aluminium-shell



Fig 1

The aluminium-shell is removed with the help of a wide wooden wedge. Place the wooden wedge as shown in fig.1



Fig 2

The wooden wedge unclips the aluminium-shell from the plastic clips.



Fig 3

Continue all the way around until the aluminium-shell is free.



Fig 4

If some of the plastic clips break or are damaged or fall off they should be replaced before the aluminium-shell is fitted again.

