



Tradesman Information

**Mounting of wooden and aluminium windows and outer doors
Including general requirements for performance**



Reception and storage

When unloading and handling the elements, it must be ensured that the right aids and methods are used so that the elements are not damaged. Upon reception the buyer must control that the delivery complies with the contractual basis. The buyer must also control that the elements have no evident defects (for example damage caused by transport). The supplier must immediately be informed of any complaints. Labels and cork pieces should be removed within a short period of delivery (1-2 weeks). Any corner beading, cover foil or other protecting wrapping must not be removed before the mounting of the elements. If the elements are stored outdoors they must be placed on bearers or pallets so that they do not touch the ground. The elements must be protected against rain and dirt.

Fixed lights Trendy

Please, note that fixed lights Trendy are not always palletized in the correct "direction". Thus, it is very important to check that drain holes in the aluminium part are at the bottom before mounting the unit!

Mounting Fixing and Jointing

General

Correct mounting is vital in relations to the guarantee, function and the lifespan of the elements. Thus, professionals who have experience in mounting windows and outer doors should do the mounting. The following instructions deal with some of the main issues concerning mounting, but not all details that can be important when mounting the elements. At delivery the glass will normally be mounted into the elements, but with some products (for example fixed frame) the glass is first placed in the element after mounting. When mounting the element it is often desirable to remove the window or door casement before mounting the frame.

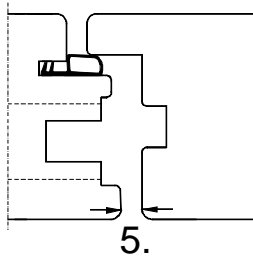
Mounting

Normally, the frame is placed in the hole in the wall with a consistent joint width at the sides and at the top. The level of the bottom of the frame compared to the sill or floor level must be taken into consideration. Usually, the free distance (joint width) between the frame and the wall should be app. 12 mm. At the hinge side the frame must be vertical on both the broad and the narrow side. The frame must be adjusted and fixed so the correct stop and the dictated space between the casement and frame are obtained.

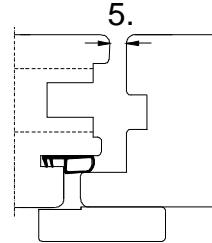


When mounting double doors you must make sure that the space in the middle is between 5-5.5 mm (see drawing on page 2).

Outward going door



Inward going door

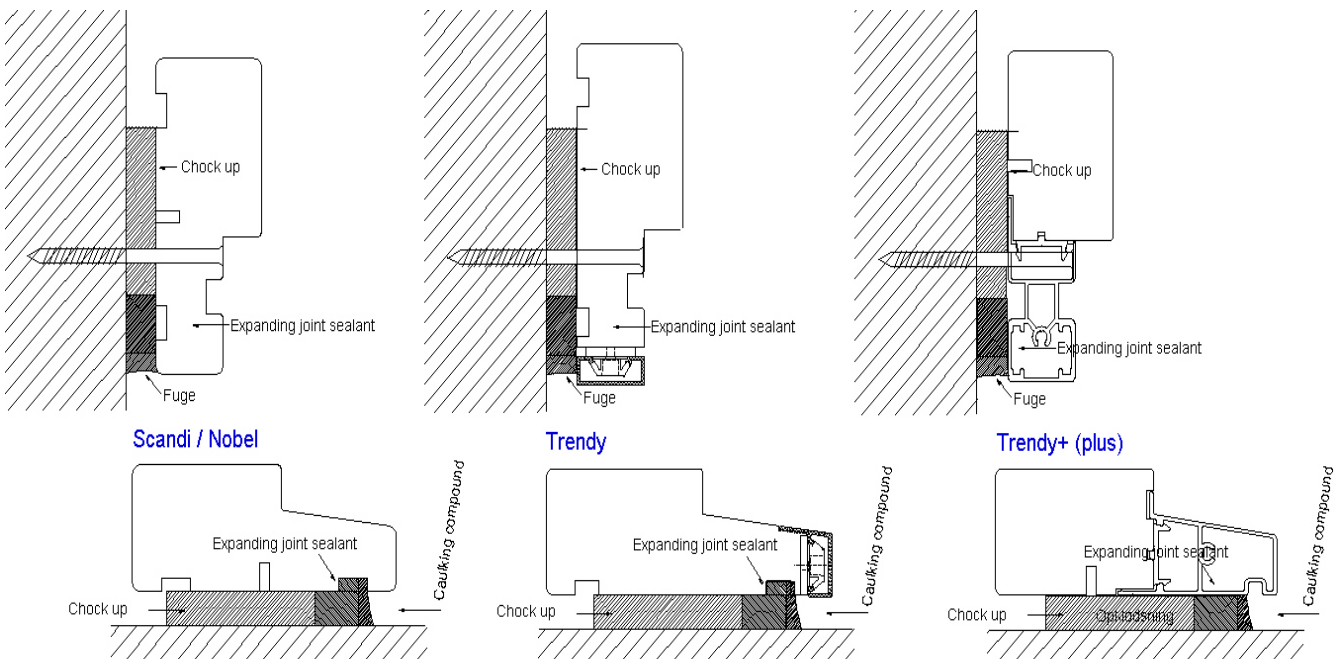


Fixing

Windows and outer doors must always be fixed to the surrounding building by mechanical aids such as frame screws/dowels or fittings. There must also be used a mechanical fixing when using a foamed material for closing the gap between the outer frame and the surrounding wall as stated in the following. The fixation can be done without support if a fixation aid, which secures the frame to the wall, is used such as frame screws/dowels or fittings at the individual fixation points. If using other fixation aids a firm and permanent support of moisture stable material must be used – for example waterproofed plywood or synthetic material – if necessary supplemented with wall cardboard. However, permanent support must never be used on the top frame on wide elements as for example sliding doors where there can be a risk of overload from the construction above. In general, the distance between the fixation points must not exceed 90 cm.

Angles

If you do follow this instruction but instead use angles for mounting, the erector must be able to document that the dimensions of the angles is of a quality that can be compared to our recommendation which is screws mounted in the rebate. However, the distances between the angles must not exceed 600 mm.



Important notice: BI FOLDING DOORS.

1. It is important that the screws are fitted directly into the frame and directly into the wall (figure 1 - above), Straps are not allowed to fit this type of door
2. Top frame and Rail must be fitted directly into the upper wall se figure 2
3. It is important that the space between frame and sash is min 6 mm after the door I fitted – figure 3
4. The threshold must be supported by a chock every 500 mm + where the leafs are meeting / center

Figure 2

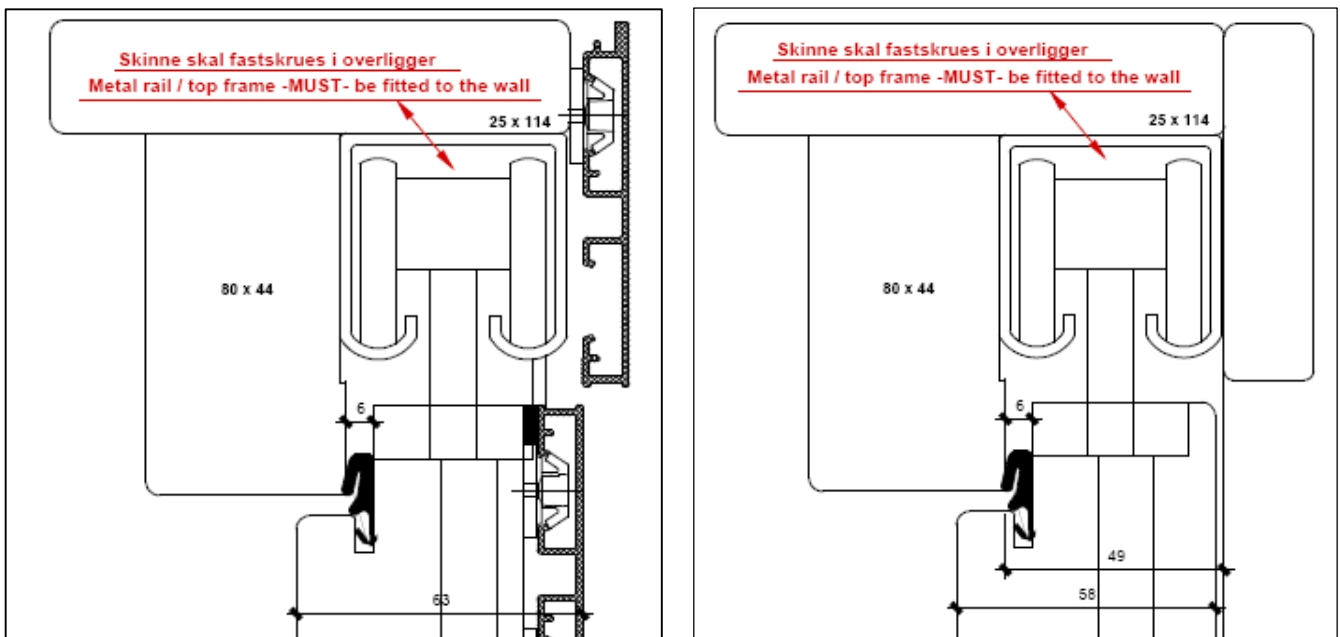
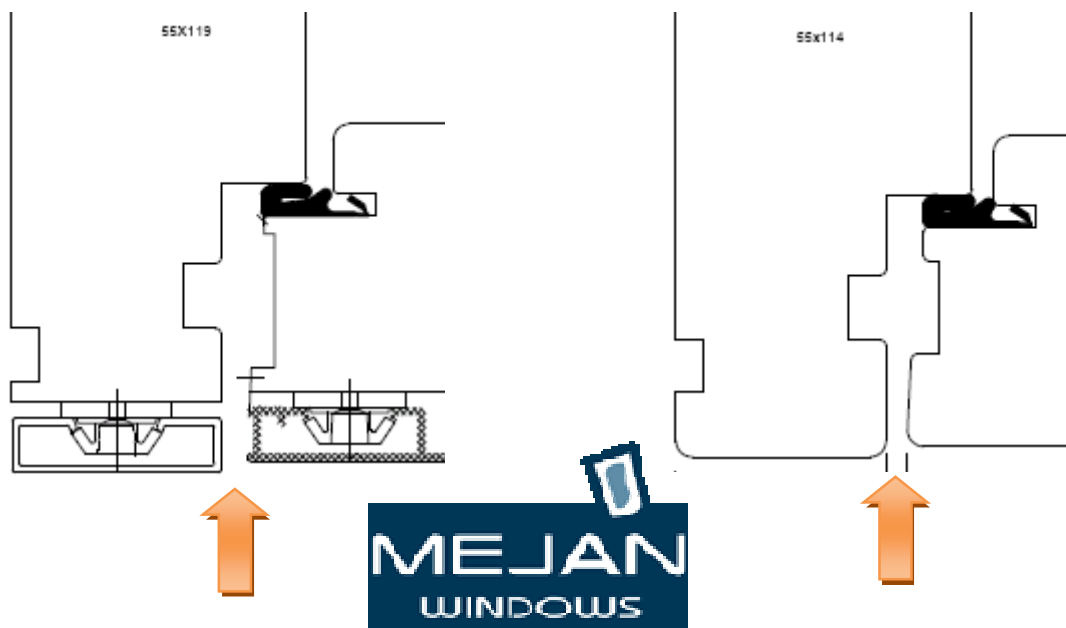


Figure 3



Important notice: LIFT AND SLIDE DOORS.

1. When mounting lift and slide doors the bottom frame **MUST** be 100% horizontal and blocked up **EVERY** 30 cm.
2. Hereafter the side frame of the sliding unit. The frame **MUST** be plumb, but it is important that frame and sash are parallel, the tolerance between the door sash and the frame must not exceed 1 to 2 mm (A Measurement - Fig 2)
3. Screws in the frame are fastened as shown in Fig 1
4. The lock bolts do not pull the sash towards the frame – the purpose of the lock bolts are to keep the door locked.

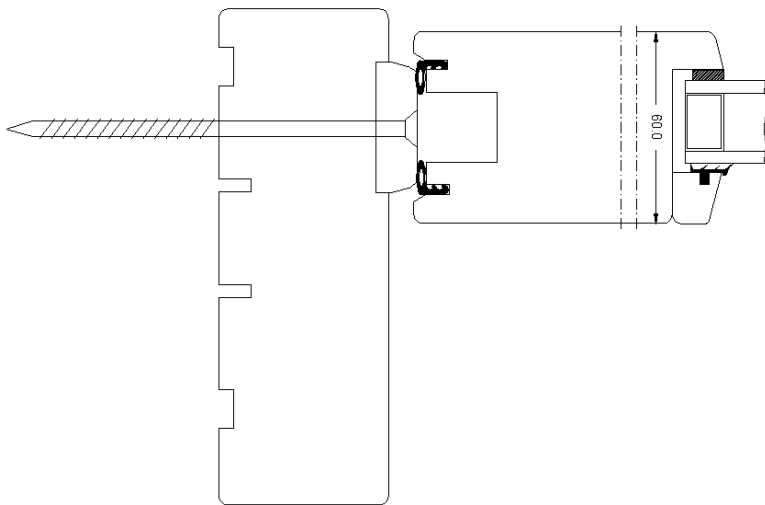


Figure 1

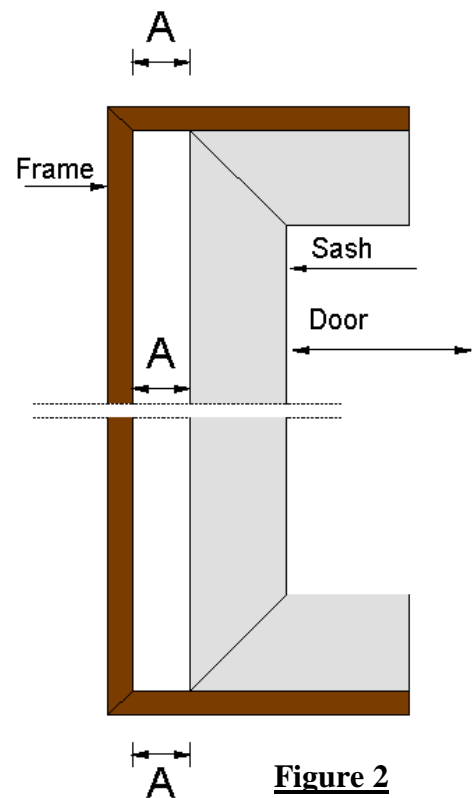


Figure 2

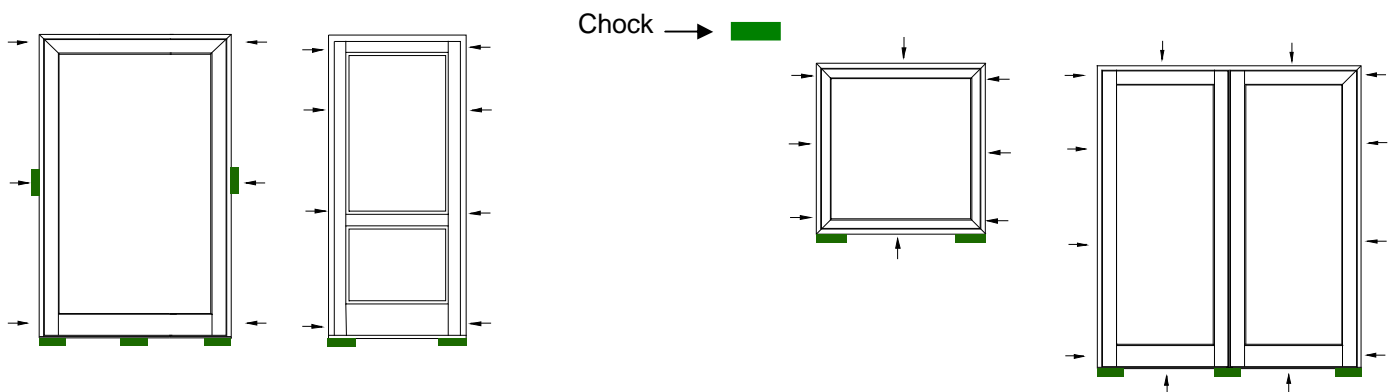
Especially for Windows

If the width of the element is below 120 cm the fixation of the upper and lower frame can be left out.

At the bottom frame's outmost end there must be a permanent chock. Elements with vertical Posts must also have a permanent chock beneath the bottom frame (see drawings below). The material for chocks must be as stated for permanent support.

Especially for doors

In the hinge side the upper 1/3 is placed, and at the bottom the fixation aids are placed close to the hinges. At the bottom frame's outmost end there must be a permanent chock. A permanent chock below the middle of the bottom frame is recommended for wide doors. If an aluminium doorstep is used it should be chocked up under the whole length of the bottom frame to avoid rattling.



Two-leaf doors, with or without a post in the middle, must have a permanent chock under the post beneath the bottom frame. The material for chocks must be as stated for permanent support. In the closing side there must be a permanent support behind the lock washer. This support primarily helps to avoid break-ins.

Lockcase *Important.*

Handles and rosettes **MUST** be mounted immediately after fitting the doors – if not it will invalidate the guarantee.

Jointing

Joints (caulk joints) are made as described for the individual project. When working with insulation material must not be compressed, as this will make the frame bend. If a foamed material is being used fitting should wait until the foam process has ended. Protecting covers such as joint filler, joint strip or another efficient arrangement must always be applied at the outer side of the door. At the bottom frame it must be ensured that the outer joint does not cover drains or slits in the rebates underside.

Surface treatment

The elements have been vacuum impregnated against rot and mould at the factory. Elements which are not delivered with a finishing surface treatment must at least ones before mounting be given a waterproofed pigmented surface treatment. A colourless treatment on the outer side must not be used. Please note that acrylic paint sticks to PVC weather strips. The factory can advice you on which surface treatment to use.

Airing *the house during construction*

During construction the house must be ventilated so that there is no condensed water on the windows. It is important to be aware of the fact that MAHOGANY elements is and must be treated as a raw element – thus you must control the moisture.

Maintenance

Cleaning and Lubrication Maintenance in general A regular maintenance should be carried out on all windows and doors no matter material. This implies cleaning and lubrication and control of weather strips and copings. This maintenance must be done according to the following guidelines.

Cleaning

The outer casements and frames will get dirty and should be cleaned regularly. Normally, this cleaning is carried out when the windows are being cleaned. The casement and frame is washed in water and regular cleaning materials. Afterwards the casement and frame are wiped dry.

Lubrication

Upon delivery all moving parts near hinges, locking fastenings and lock mountings should be adjusted and lubricated. It is especially important that moveable riveted joints by for example turn fittings are kept clean and lubricated at least once a year. Pure metal joints are lubricated with acid free oil, which can be applied with an oil can, a syringe or from a spray can with a thin pipe. Moveable joints between metal and synthetic material are lubricated with stearin or a special friction agent depending on the supplier's instruction. These kinds of joints occur at different types of sliding rails. It is important for their function that the rails sliding surface is kept clean as well.



Weather Stripes and Copings

Together with the annual lubrication the weather stripes and copings should be checked. The weather strips should have their position and fixation checked. It should also be checked if the strips still fulfil their sealing function. With most of the element types it is simple to dismantle and remount the weather strips and it should if possible take place together with maintenance of the surface treatment.

The weather strips must never be painted over! The copings are checked to see if their position and compression still secures density and whether the angle joints are completely tight. The easiest way to check the copings compression is done by using a thin feeler gauge – or a razor blade which must meet an obstacle when it is placed between the glass and the coping.

Surface treatment

With regards to the industrial surface treatment of elements containing wood please see appendix 14 in VinduesIndustriens Technical Resolution. Maintenance of surface treatment should follow the directions given by the window manufacturer. Normally new windows will be very hermitically and there is thus need for regular airing of the entire home.

Handling of windows and doors

Facade panels – windows and doors

This instruction describes good and practical measures so that work can be carried out safely with for example use of technical aids.

Survey of technical aids

This survey can be used as an appendix to the instructions above and among other things it contains an overview of suppliers of technical aids.

Read more on our homepage

Declaration of guarantee

Further information concerning guarantee can be obtained at Vinduesindustrien or be read on their homepage <http://www.vinduesindustrien.dk/>

DVC

As a member of VinduesIndustrien (The Association of Danish Window Manufacturers) we are also a member of DVC. Thus we can ensure you that our products are of the highest quality. A membership of DVC implies that our products and our quality control are checked at least twice a year.

DVC makes certain demands to its members. Among other things these cover management, quality control, construction of the products, quality of material and workmanship. VinduesIndustrien's members are manufactures of windows and doors in wood, wooden-aluminium, plastic and aluminium, and we can ensure you that they all have the DVC label.

